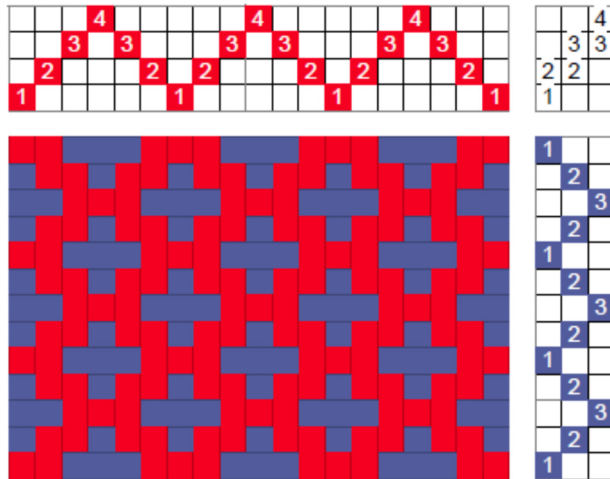


Pointed Twill

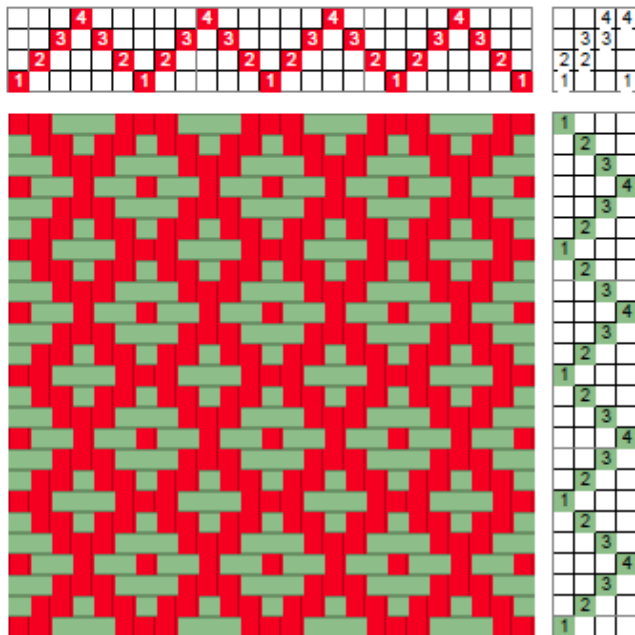
If we reverse a straight twill, a pointed twill is formed. We can also think of a pointed twill as a right-hand and a left-hand twill together, as can be seen from the drawdown below. If we use the



twill circle (see straight twill), the drawdown on the left is the tromp-as-writ treadling, according to Mary Black, but, as she says, the fabric formed this way is not very attractive as shown below.

Instead, the treadling below is used, which does mirror the threading, but it is called a bird's eye twill. However, there is also

another threading for a bird's eye twill (see bird's eye twill entry); the nomenclature can become confusing, but the important thing is to understand the draft.



On the right is the fabric corresponding to the drawdown above.

